

# Final Drives Large

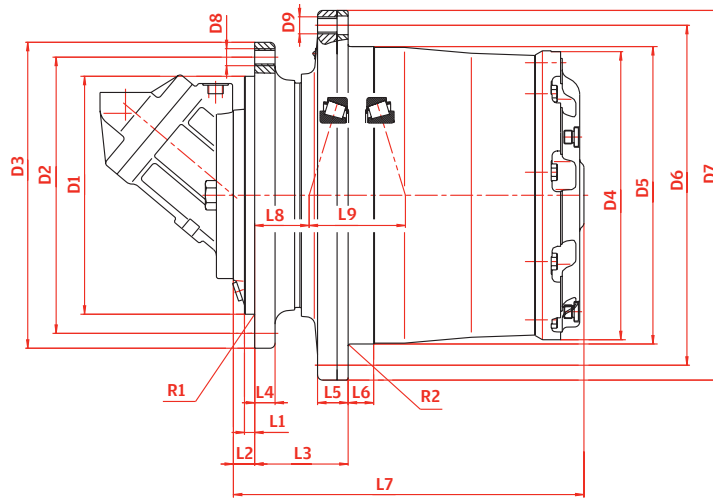
## Standard features

- › Compact structure
- › High performance
- › 3-7 Planetary wheels per stage
- › Notchless ground tooth root
- › Different ratios
- › Integrated disc-brake
- › Different hydraulic motors
- › High availability by highest teeth and production quality

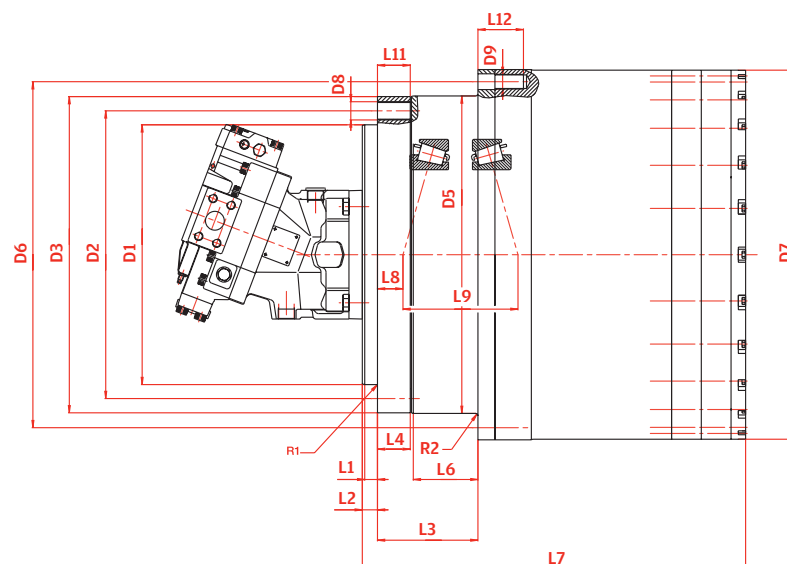
## Special executions on request

- › Mechanical disconnect device

Standard input version - ST



Crawler Crane version - CC



		<b>F 130</b>	<b>F 180</b>	<b>F 220</b>	<b>F 260</b>	<b>F 360</b>	<b>F 440</b>	<b>F 560</b>			
Output torque <sup>2</sup>	<b>kNm</b>	130	180	220	260	360	440	560			
Ratio <sup>1,3</sup>	<b>i</b>	81	206	97	69	94	352	739			
		85	281	119	97	128					
		115	(412) <sup>7</sup>	190	245	223					
		159	(824) <sup>7</sup>	248	345	257					
		167		290	(670) <sup>7</sup>	490					
		180		345	(1115) <sup>7</sup>	(385) <sup>7</sup>					
		206		(744) <sup>7</sup>	(1784) <sup>7</sup>	(446) <sup>7</sup>					
			(805) <sup>7</sup>			(1115) <sup>7</sup>					
						(1784) <sup>7</sup>					
<b>VERSION<sup>5</sup></b>		ST	ST	CC	ST	CC	ST	CC	CC		
<b>CAPACITY OF BEARING</b>											
C-dynamic	<b>kN</b>	523	787	787	765	750	750	750	1 040	1040	1040
Co-static	<b>kN</b>	980	1650	1650	1660	1560	1560	1560	2450	2450	2450
Weight <sup>6</sup>	<b>kg</b>	452	636	636	740	895	865	895	1080	1300	2000
<b>PARK BRAKE</b>											
Locking torque	<b>Nm</b>	750	1375 (800) <sup>4</sup>	1375 (800) <sup>4</sup>	1200	1000	1000	1000	1700	1700 (1000)*	900
Release pressure min.	<b>bar</b>	17	35 (35) <sup>4</sup>	35 (35) <sup>4</sup>	15	15	15	15	12	15 (7.8)*	13
<b>HYDRAULIC MOTOR</b>											
plug in fixed	<b>ccm</b>	107	160	180	107	107			355		
		125	180		180	180					
		160									
		180									
plug in variable	<b>ccm</b>	107	160		160	160	355	160	355	250	160
		160			200		250			160	
					250						
<b>DIMENSIONS</b>											
L 1	<b>mm</b>	45	30	25	18	21	21	21	100	40	40
L 2	<b>mm</b>	45	30	30	52	25	45	25	100	43	43
L 3	<b>mm</b>	190	168	171	166.5	165.5	170	165.5	130	255	255
L 4	<b>mm</b>	35	40	80	40	54	40	54	40	40	45
L 5	<b>mm</b>	58	56	/	61	/	48	/	60	25	45
L 6	<b>mm</b>	45	21.5	86	35	106.5	60	106.5	80	25	120
L 7	<b>mm</b>	530	534.5	564.5	580.5	631.5	579	631.5	658	820	831.5
L 8	<b>mm</b>	50.5	50.3	80.3	16	42	18.5	42	-25	80	80
L 9	<b>mm</b>	147	141.4	141.4	187.5	189.5	189.5	189.5	215	213	213
L10	<b>mm</b>	/	/	/	/	/	/	/	/	/	/
L11	<b>mm</b>	/	/	35	/	54	/	54	/	40	45
L12	<b>mm</b>	/	/	81.5	/	75	/	75	/	70	70
R 1	<b>mm</b>	25	4	4	35°/16/16	/	2	/	18°/100/16	/	4
R 2	<b>mm</b>	4	3	5	4	4	/	4	10	/	4
D 1	<b>mm</b>	390	450	340	460	428	460	428	580	450	450
D 2	<b>mm</b>	500	510	400	600	474	520	474	680	515	515
D 3	<b>mm</b>	550	560	444	650	521	570	521	735	569	569
D 4	<b>mm</b>	449	528	/	540	/	608	/	649	669	763
D 5	<b>mm</b>	450	535	445	542	523	610	523	650	670	570
D 6	<b>mm</b>	500	600	495	600	570	680	570	720	620	620
D 7	<b>mm</b>	550	650	528	650	608	735	608	775	670	670
D 8 / D 9	<b>M</b>	24x2	24x2 27x2	33x1.5 27x2	24x2	30x2 24x1.5	30x2/ Ø33	30x2 24x1.5	30	36x3 30x2	36x1.5 30x1.5
Qty. D 8 / D 9		32/32	30/30	24/30	38/38	30/36	24/24	30/36	30/30	30/30	29/42

\* Park brake integrated in hydraulic motor

1) 2-stage on demand

2) Stated torques are peak values for short duration

3) Other ratios on demand

4) Optional brake torques

5) ST= Standard CC= Crawler Crane

5) Without hydraulic motor

7) In combination with input bevel drive r

# Final Drives XLarge

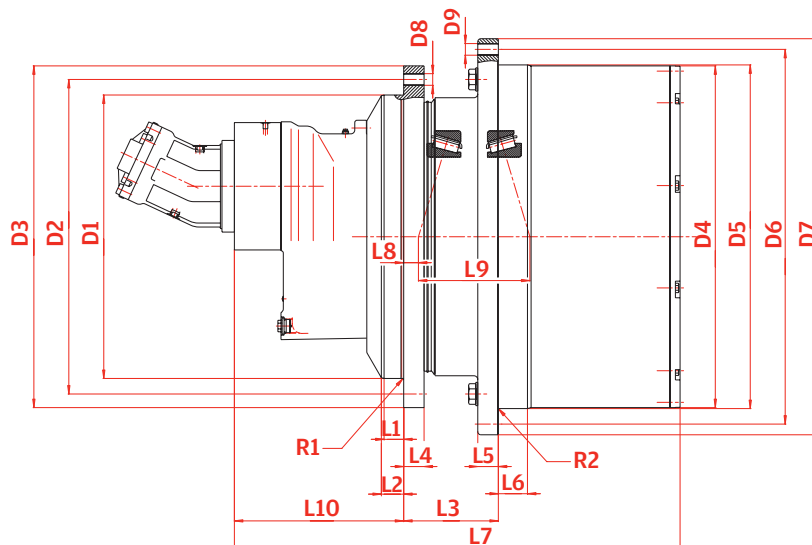
## Standard features

- › Compact structure
- › High performance
- › 3-7 Planetary wheels per stage
- › Notchless ground tooth root
- › Different ratios
- › Integrated disc-brake
- › Different hydraulic motors
- › High availability by highest teeth and production quality

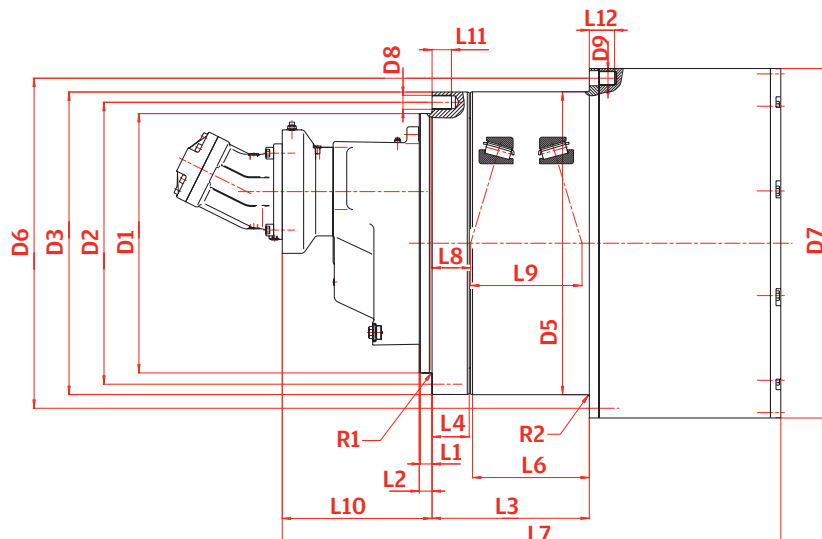
## Special executions on request

- › Mechanical disconnect device

Standard input version - ST



Crawler Crane version - CC



		<b>F 620</b>	<b>F 700</b>	<b>F 700A</b>	<b>F 800</b>	<b>F 1100</b>	<b>F 1300</b>	<b>F 1800</b>	<b>F 2200</b>	<b>F 3000</b>	
Output torque <sup>1</sup>	<b>kNm</b>	620	700	700	800	1100	1300	1800	2200	2916	
Ratio <sup>2</sup>	<b>i</b>	328 293 249	377	648	283	406	461	656 744	552	699	
<b>VERSION<sup>3</sup></b>		ST	CC	CC	CC	ST	ST	ST	CC	ST	ST
<b>CAPACITY OF BEARING</b>											
C-dynamic	<b>kN</b>	1320	1320	1320	1320	2485	3900	3900	3900	5100	6110
Co-static	<b>kN</b>	3150	3150	3150	3150	5941	7650	7650	7650	11600	11900
Weight <sup>4</sup>	<b>kg</b>	2897	2897	3350	3350	3764	7220	7400	9000	10736	11500
<b>PARK BRAKE</b>											
Locking torque	<b>Nm</b>	1200	1200	1200	1200	*1000	1750	1750	1200	2300	1700
Release pressure min.	<b>bar</b>	28	28	28	28	*7,8	20	20	28	22	12
<b>HYDRAULIC MOTOR</b>											
fixed	<b>ccm</b>	(2x) 250 (1x) 500	(2x) 200 (2x) 160	(2x) 250		(2x) 250	(2x) 250	(2x) 250	(2x) 250	(2x) 355	
variable	<b>ccm</b>	(2x) 250 (1x) 500	(2x) 160	(2x) 250	(2x) 160	(2x) 250	(2x) 250		(2x) 250	(2x) 355	(3x) 250
<b>DIMENSIONS</b>											
L 1	<b>mm</b>	50	30	30	30	20	57	57	55	60	60
L 2	<b>mm</b>	57.5	33	33	33	25	60	60	60	70	70
L 3	<b>mm</b>	245	405	405	405	229	503	503	478	343	343
L 4	<b>mm</b>	52.5	96	96	96	60	74	74	158	80	80
L 5	<b>mm</b>	53	/	/	/	58	/	/	/	100	100
L 6	<b>mm</b>	75	306	306	306	170	/	/	239	80	80
L 7	<b>mm</b>	1232	1159	1283.5	1372.5	1315	1483	1623	1785.5	1846	2000
L 8	<b>mm</b>	38	99	99	99	161/163	176	176	171	217	217
L 9	<b>mm</b>	287	287	287	287	257/253	368	368	375	376	376
L10	<b>mm</b>	341	352.8	352.8	474.8	713	713	395.5	602.5	591	606
L11	<b>mm</b>	/	50	50	50	/	/	/	50	/	/
L12	<b>mm</b>	/	65	65	65	/	/	/	90	/	/
R 1	<b>mm</b>	4	4	4	4	6	10	10	4	10	10
R 2	<b>mm</b>	/	5	5	5	8	6	6	6	10	10
D 1	<b>mm</b>	730	668	668	668	830	1110	1110	785	1288	1288
D 2	<b>mm</b>	810	726	726	726	980	1230	1230	851	1400	1400
D 3	<b>mm</b>	880	779	779	779	1050	1310	1310	923	1500	1500
D 4	<b>mm</b>	880	/	/	/	916	1116	1116	/	1224	1224
D 5	<b>mm</b>	885	782	780	780	920	-	1100	935	1230	1230
D 6	<b>mm</b>	965	830	850	850	976	1170	1170	1016	1320	1320
D 7	<b>mm</b>	1020	880	900	900	1055	1226	1226	1224	1400	1400
D 8 / D 9	<b>M</b>	30x2	36x1.5 30x1.5	36x1.5	36x1.5	30 x 2	36/30	36/30	42x2	42x3	42x3
Qty. D 8 / D 9		41/48	30/45	30/45	30/45	48/48	48/52	48/52	40/40	50/48	50/48

1) Stated torques are peak values for short duration

2) Other ratios on demand

3) ST= Standard CC= Crawler Crane

4) Without hydraulic motor