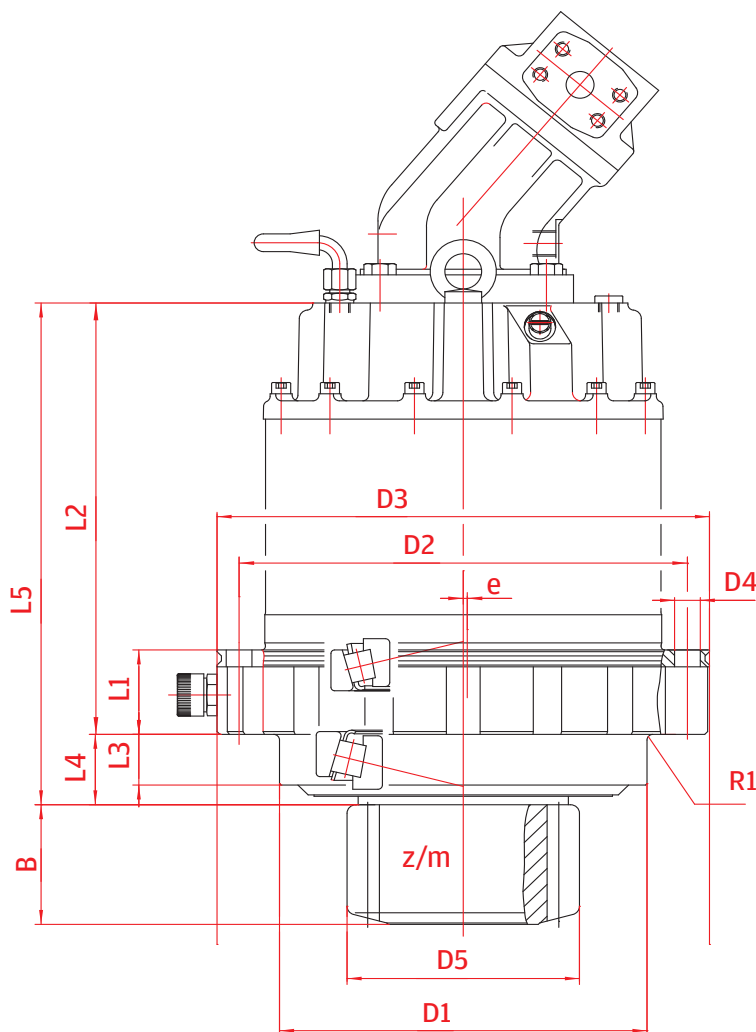


Slew Drives

Standard features

- › Compact structure
- › High performance
- › Notchless ground tooth root
- › Integrated disc-brake
- › Different hydraulic motors
- › High availability by highest teeth and production quality



		S 5	S 7	S10		S 13	S 17	S 30	S 34	S 35	S 54	S 90	S 130
Output torque ¹	kNm	5.5	7	10		13.3	17.5	30	34	35	54	90	130
Ratio ²	i	25 33	23 27 33	24 27 31 36		36	33	45	45	35	48	39	67
Hydraulic motor ³	ccw	28 30 32	45 56 63	45 56 63	80 90	56 63 80 90	80 90	125	160	180	180 200	355 500	Electric ⁶
MULTI-DISC BRAKE													
Braking torque	Nm	310	475	475		740	890	1030	1030	1030	1200	3000	2300
Release pressure min.	bar	14	14	14		18	18	18	18	18	38	14	22.5
Output pinion ⁴	z/m	10/10	10/11	12/12		10/14	11/14	12/16	12/16	12/18	13/22	16/24	13/30
	B	95	79	90		99	109	154	154	160	230	182	230
	D 5	130	141	184		181	198	243	243	274	357	464	480
		10/10 79 130	12/10 79 151	13/10 85 158		11/14 99 198	11/16 109 220				12/20 188 301	16/22 177 422	
		11/10 79 143	13/10 79 158	13/10 94.5 155		12/12 99 184	12/12 104 184						
		14/8 69 134	13/10 98 155	13/10 100 158		13/12 88 195	13/12 ⁵ 110 ⁵ 190 ⁵						
		15/6.35 77 112		13/12 110 190		13/12 ⁵ 110 ⁵ 190 ⁵	13/14 122 221						
				13/12 90 195		14/12 110 199	14/16 150 273						
						14/12 110 201							
Weight without Motor (appr.)	kg	68	98	108	123	147	168	540	480	528	867	1225	2276
DIMENSIONS													
L 1	mm	60	60	60		71	86	332	332	239	610	80	578
L 2	mm	262	296	306.5	314	340	355	737	785	653	780	730	622
L 3	mm	31	31	36		30(50) ⁵	50.5	33	33	30	40	173	95
L 4	mm	40	40.5	50		55(75) ⁵	55	65	65	91	87	199	160
L 5	mm	302	336.5	356.5	364	395(415) ⁵	410	802	808	744	917	929	1012
D 1	mm	175	230	250		275	275	350	350	400	460	500	630
D 2	mm	260	285	305		335	335	415	415	460	520	640	675
D 3	mm	288	322	335		370	370	450	450	500	562	690	715
D 4	mm	12x17.5	12x17.5	18x17.5		20x17.5	20x17.5	24x22	24x22	24x26	24x26	18x30	34x26
e	mm	–	–	–		1	–	–	–	2	–	–	–
R 1	mm	6	6	4		4	4	1.6	1.6	10	–	–	–

1) Stated torques are peak values for short duration

2) Other ratios on demand

3) Other hydraulic motors on request

4) Output Pinion execution acc. to requirement

5) Optional

6) Hydraulic motor connection on demand