

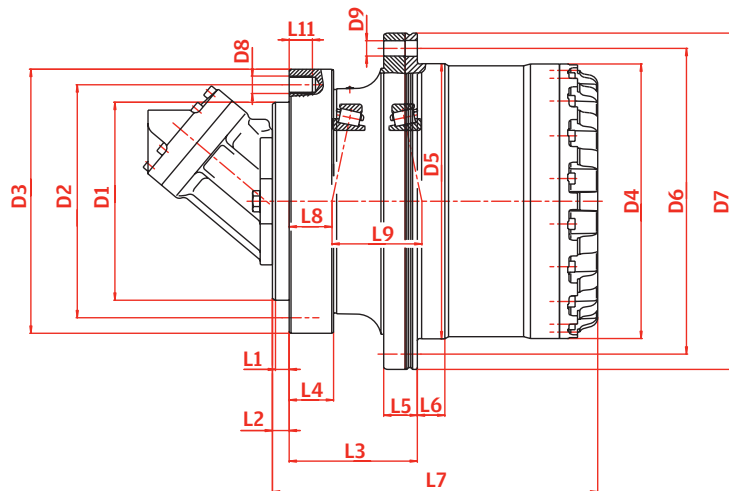
# Cutter Drives Medium

## Standard features

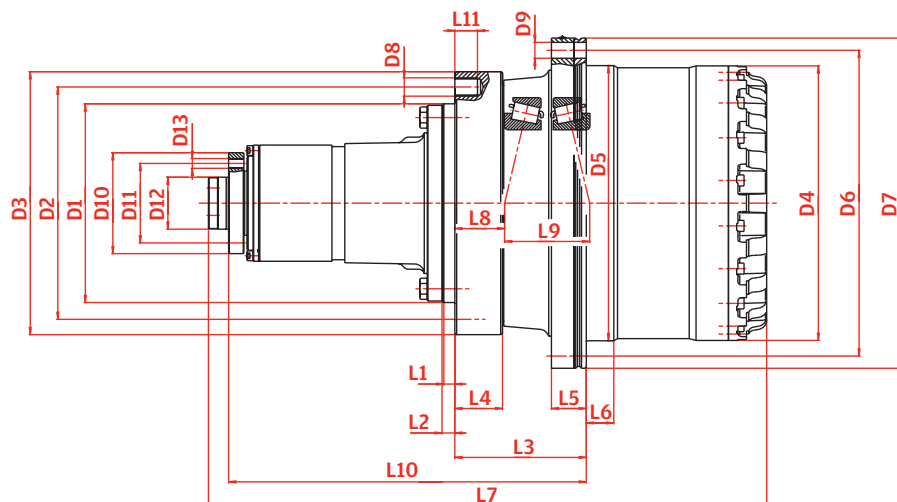
- › Compact structure
- › High performance
- › Notchless ground tooth root
- › Different ratios
- › Suitable for various hydraulic motors
- › High availability by highest teeth and production quality

## Special executions on request

Standard Input version - ST



Mechanical Input version - MI



		<b>FA30</b>	<b>FA40</b>		<b>FA55</b>		<b>FA80</b>	<b>FA100</b>	
Max. cutting torque	<b>kNm</b>	8.5	12		16		23	32	
Input power	<b>kW</b>	80	110		150		220	300	
Ratio <sup>1</sup>	<b>i</b>	19	19		16 19 22		19	21 22	
<b>VERSION<sup>2</sup></b>		ST	ST	MI	ST	MI	ST	ST	MI
<b>CAPACITY OF BEARING</b>									
C-dynamic	<b>kN</b>	132/194	224	224	224	224	300	498	498
Co-static	<b>kN</b>	255/325	405	405	405	405	570	1010	1010
Weight	<b>kg</b>	86	122	172	163	223	223	330	360
<b>DIMENSIONS</b>									
L1	<b>mm</b>	13	12	10	12	18	20	35	8
L2	<b>mm</b>	25	35	10	25	18	35	35	8
L3	<b>mm</b>	75	91	125	110	136	90	165	182
L4	<b>mm</b>	15	21	55	24	50	22	28	28
L5	<b>mm</b>	29	34	32	34	34	35	51	40
L6	<b>mm</b>	25	26	26	30	30	24	43	43
L7	<b>mm</b>	278.5	327	631.5	374	688.5	414.5	461	843.5
L8	<b>mm</b>	28	38	72	64	90	34	32	27
L9	<b>mm</b>	89	100	100	113	113	123	139	138
L10	<b>mm</b>	/	/	402	/	421	/	/	540
L11	<b>mm</b>	15	21	55	24	50	22	28	28
R1	<b>mm</b>	2.5	2.5	1	1	1	4	12/60	1.6
R2	<b>mm</b>	2.5	2.5	2.5	2.5	2.5	2.5	5	2.5
D1	<b>mm</b>	/	270	270	280	280	330	390	325
D2	<b>mm</b>	/	310	310	325	325	370	460	380
D3	<b>mm</b>	/	345	360	360	360	410	500	415
D4	<b>mm</b>	269	294	294	329	329	374	407	407
D5	<b>mm</b>	270	295	295	350	350	400	408	408
D6	<b>mm</b>	305	335	335	400	400	450	460	460
D7	<b>mm</b>	335	370	370	435	435	490	502	502
D8 / D9	<b>mm</b>	M16 / Ø 17.5	M20x1.5 / Ø 17.5	M20x1.5 / Ø 17.5	M20x1.5 / Ø 22	M20x1.5 / Ø 22	M24x2 / Ø 25	M24x2 / Ø 26	M20 / Ø 26
Qty. D8 / D9		18/18	16/20	16/20	24/20	24/20	20/20	30/24	12/12
D10	<b>mm</b>	/	/	138	/	138	/	/	165
D11	<b>mm</b>	/	/	110	/	110	/	/	130
D12	<b>mm</b>	/	/	80	/	80	/	/	85
D13	<b>mm</b>	/	/	M16	/	M16	/	/	M16
Qty. D13		/	/	6	/	6	/	/	8

1) Other ratios on demand

2) ST - Standard Input / MI - Mechanical Input (Hydraulic Motor)

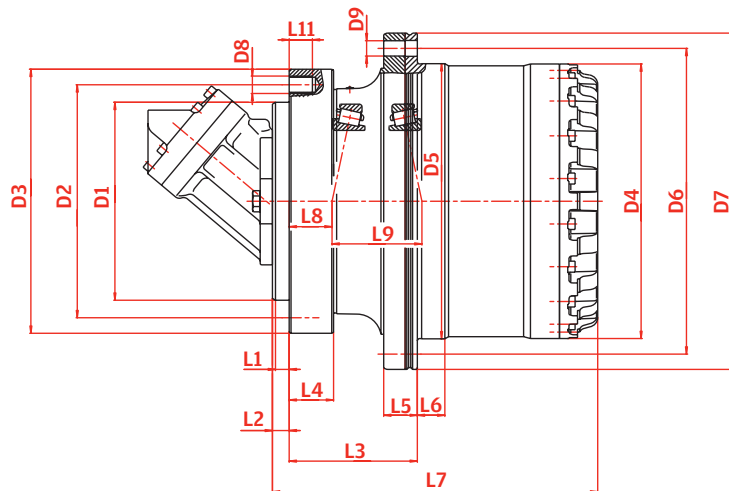
# Cutter Drives Large

## Standard features

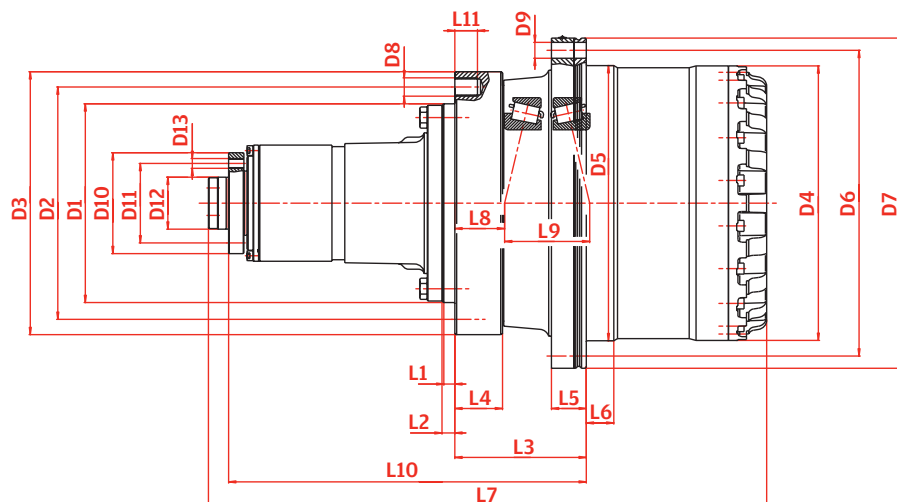
- › Compact structure
- › High performance
- › Notchless ground tooth root
- › Different ratios
- › Suitable for various hydraulic motors
- › High availability by highest teeth and production quality

## Special executions on request

Standard Input version - ST



Mechanical Input version - MI



		<b>FA130</b>		<b>FA200</b>		<b>FA360</b>		<b>FA800</b>	
Max. cutting torque	<b>kNm</b>	38		47		84		115	
Input power	<b>kW</b>	400		500		880		1200	
Ratio <sup>1</sup>	<b>i</b>	14 18 24 21 22		20		25		24	
<b>VERSION<sup>2</sup></b>		ST	MI	ST	MI	ST		ST	
<b>CAPACITY OF BEARING</b>									
C-dynamic	<b>kN</b>	750	750	787	787	1040		4300	
Co-static	<b>kN</b>	1290	1290	1650	1650	2450		9650	
Weight	<b>kg</b>	490	426	718	710	1145		4223	
<b>DIMENSIONS</b>									
L1	<b>mm</b>	18	18	20	20	35		20	
L2	<b>mm</b>	20	20	25	25	100		25	
L3	<b>mm</b>	215	215	160	160	130		229	
L4	<b>mm</b>	78	78	102	102	40		60	
L5	<b>mm</b>	57	57	58	58	60		95	
L6	<b>mm</b>	45	45	22	22	80.5		89	
L7	<b>mm</b>	530	913	603.5	890.5	657.5		981	
L8	<b>mm</b>	81.4	81.4	75.8	75.8	75.1		3)	
L9	<b>mm</b>	139.2	139.2	149.4	149.4	214.8		3)	
L10	<b>mm</b>	/	585	/	438	/		/	
L11	<b>mm</b>	37	37	37	37	40		60	
R1	<b>mm</b>	2	2	2	2	18°/100/16		6	
R2	<b>mm</b>	2	2	2	2	10		8	
D1	<b>mm</b>	325	325	323.8	323.8	580		830	
D2	<b>mm</b>	380	380	381	381	680		980	
D3	<b>mm</b>	430	430	482	482	735		1050	
D4	<b>mm</b>	449	449	540	540	649.5		930	
D5	<b>mm</b>	450	450	605	605	650		1040	
D6	<b>mm</b>	500	500	635	635	720		1250	
D7	<b>mm</b>	540	540	635	635	775		1329	
D8 / D9	<b>mm</b>	M30 / Ø 26	M30 / Ø 26	M30x2 / Ø 18	M30x2 / Ø 18	M30 / M30		M30x2 / M30x2	
Qty. D8 / D9		12/24	12/24	12/24	12/24	30/30		48/48	
D10	<b>mm</b>	/	165	/	165				
D11	<b>mm</b>	/	130	/	130				
D12	<b>mm</b>	/	85k6	/	85k6				
D13	<b>mm</b>	/	M16	/	M16				
Qty. D13		/	8	/	8				

1) Other ratios on demand

2) ST - Standard Input / MI - Mechanical Input (Hydraulic Motor)

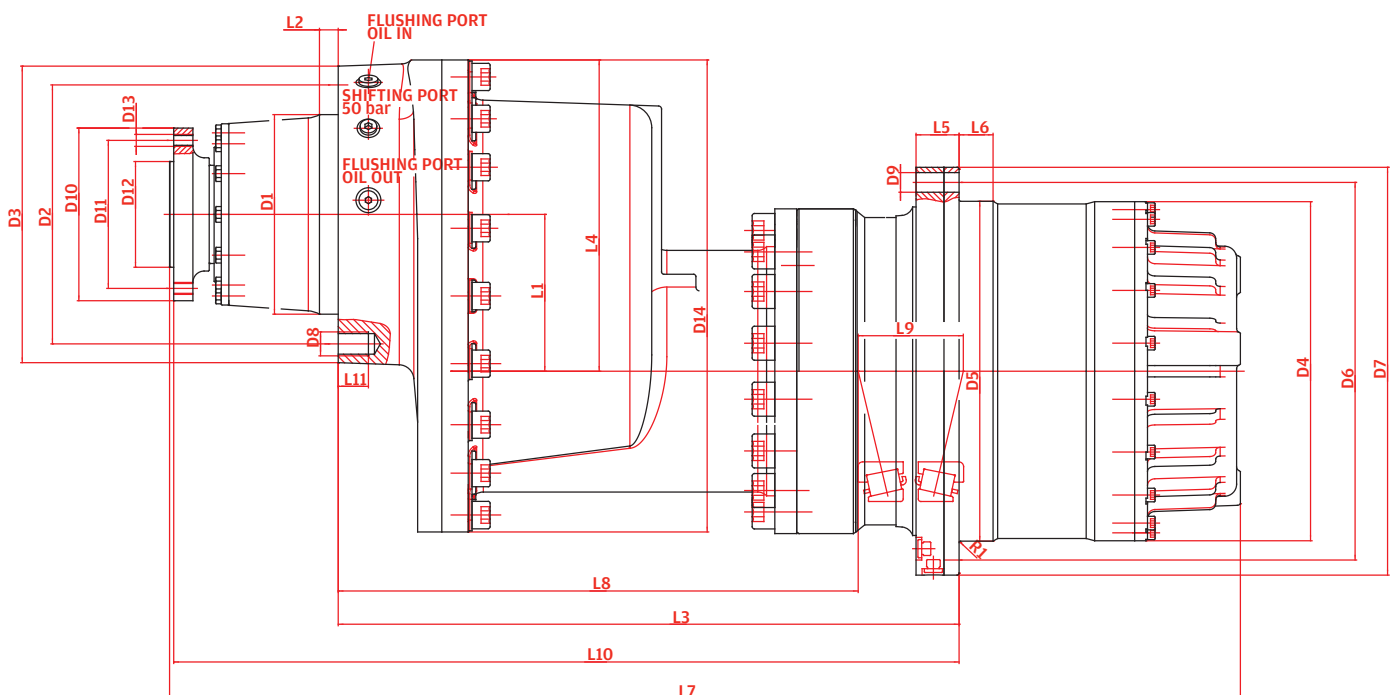
# 2-Speed Cutter Drives

## Standard features

- › Two speed shifting transmission
- › Main drive from proven cutter standard range (FA130/FA200)
- › Hydraulic shifting unit for gear change
- › Cutter main drive & shifting unit modular concept for easy maintenance

## Proven applications

- › Road rehabilitation
- › Surface mining



		<b>FA130 - 2S</b>		<b>FA200 - 2S</b>	
Max. cutting torque	kNm	38		47	
Input power	kW	400		540	
<b>VERSION</b>		1	2	1	2
Ratio	i	21	22.235	19.877	21.05
		13.67	18.01	13	17.05
Rotating direction input		ccw		ccw	
<b>CAPACITY OF BEARING</b>					
C-dynamic	kN	750		787	
Co-static	kN	1290		1650	
Weight	kg	900		1050	
<b>SHIFTING PRESSURE</b>					
min.	bar	35		35	
max.	bar	50		50	
<b>DIMENSIONS</b>					
L1	mm	207.65		207.65	
L2	mm	25		25	
L3	mm	822.2		807.2	
L4	mm	413		413	
L5	mm	57		32	
L6	mm	45		25	
L7 optional	mm	1418		1378	
L8	mm	1442.5		1402.5	
L9	mm	688.6		683	
L10	mm	139.2		149.4	
L11	mm	822.2		1025	
R1	mm	40		40	
R2	mm	2		2	
D1	mm	264.265		264.265	
D2	mm	342.9		342.9	
D3	mm	393		393	
D4	mm	449		533.5	
D5	mm	450		590.8	
D6	mm	500		641.35	
D7	mm	540		679.32	
D8	mm	1.25-7 UNC		1.25-7 UNC	
Qty. D8		12		12	
D9	mm	26		19.84	
Qty. D9		24		20	
D10	mm	228.6		228.6	
D10 optional	mm	196.85		196.85	
D11	mm	140		140	
D11 optional	mm	158.75		158.75	
D12	mm	140		140	
D12 optional	mm	120.7		120.7	
D13		5/8-11 UNC		5/8-11 UNC	
D13 optional		STUD 5/8-11 UNF		STUD 5/8-11 UNF	
Qty. D13		8		8	